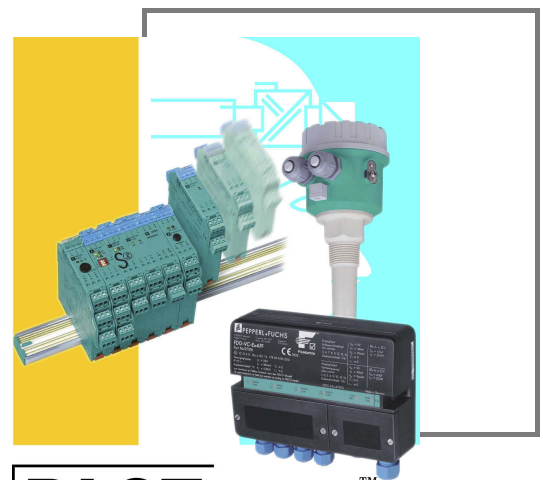


QUICK INSTALLATION GUIDE
CONFIGURATION DTM
COLLECTION
CONVENTIONAL INTERFACE



PACT*ware*TM

With regard to the supply of products, the current issue of the following document is applicable: The General Terms of Delivery for Products and Services of the Electrical Industry, published by the Central Association of the Electrical Industry (Zentralverband Elektrotechnik und Elektroindustrie (ZVEI) e.V.) in its most recent version as well as the supplementary clause: "Expanded reservation of proprietorship"



1	Introduction	4
1.1	Used Symbols	4
2	Configuration	5
2.1	Starting and Saving a Project	5
2.2	Configuring the Communication DTM	7
2.3	Configuring the Device DTM	12

1 Introduction

This quick start guide describes the configuration steps that are necessary to configure the device with the computer.

The following configuration steps are described:

- Starting and saving a project
- Configuring the Communication DTM
- Configuring the Device DTM

1.1 Used Symbols

This document contains information that you must read to avoid property damage.

Safety-relevant Symbols



Caution!

This symbol indicates a warning about a possible fault.

In case of ignoring the devices and any connected facilities or systems may be interrupted or fail completely.

Informative Symbols



Note!

This symbol brings important information to your attention.




Action

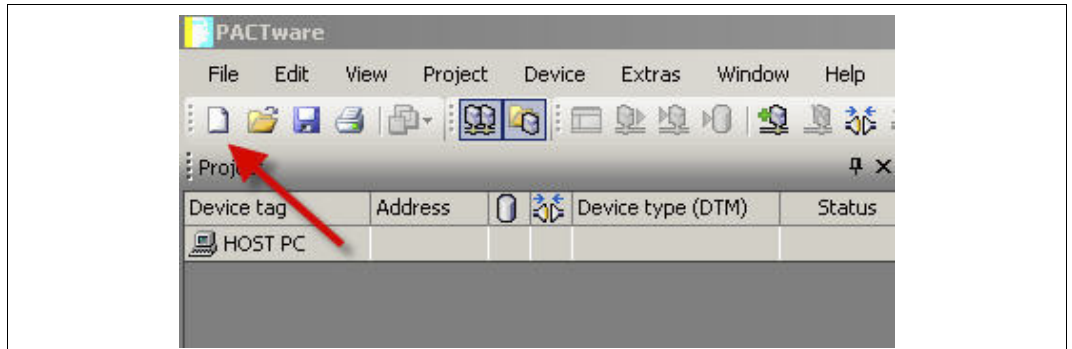
This symbol indicates a paragraph with instructions.

2 Configuration

2.1 Starting and Saving a Project

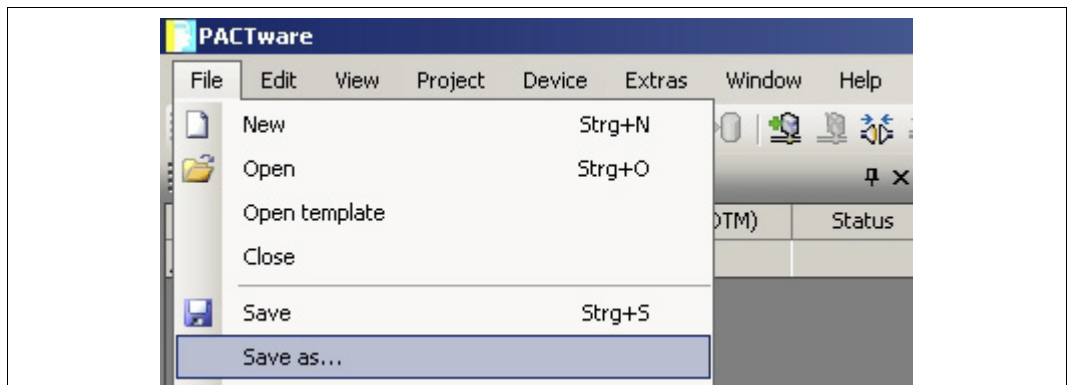
▶ Starting a Project

1. Start PACTware™ by double-clicking the icon .
> The PACTware™ main window is displayed.
2. Start a new project via **Create new project**.

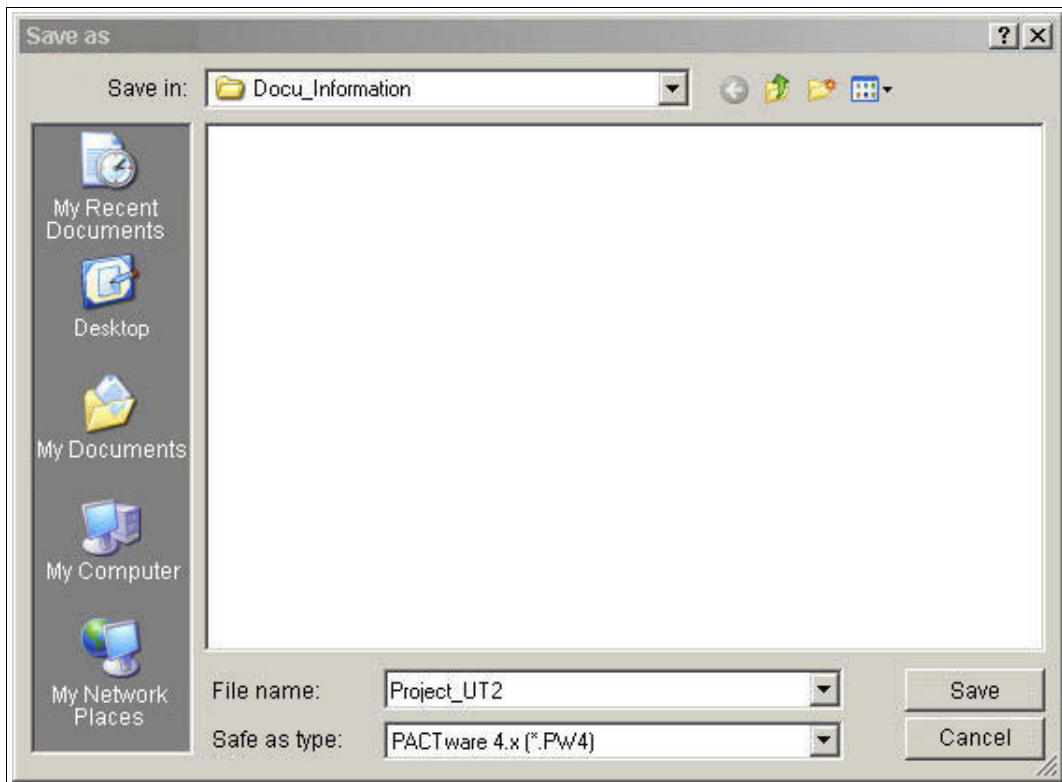


▶ Saving a Project

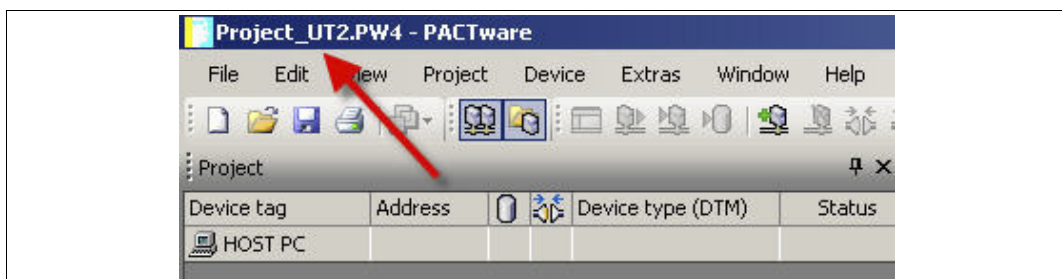
1. Save the project using the menu **File > Save as**.



2. Enter a project name and confirm the entry with **Save**.



> The project name is displayed.



Note!

For more information on operating PACTware™, See the online help.



2.2 Configuring the Communication DTM

The device is connected to the PC via the 9-pin serial interface or the USB interface.




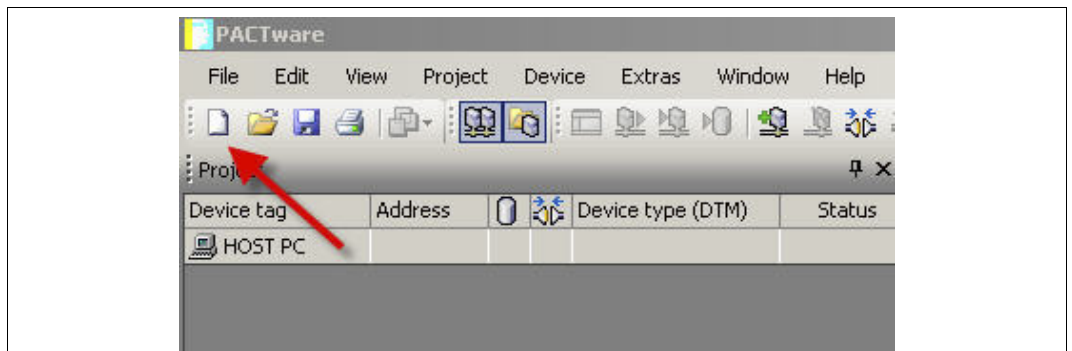
Note!

The communication DTM P2P RS232 FDT is required for both connection versions via the 9-pin serial interface and the USB interface. You cannot configure the device DTMs until you have configured the communication DTM.



Starting a Project


1. Start PACTware™ by double-clicking the icon .
 - > The PACTware™ main window is displayed.
2. Start a new project via **Create new project**.



or



Opening a Project

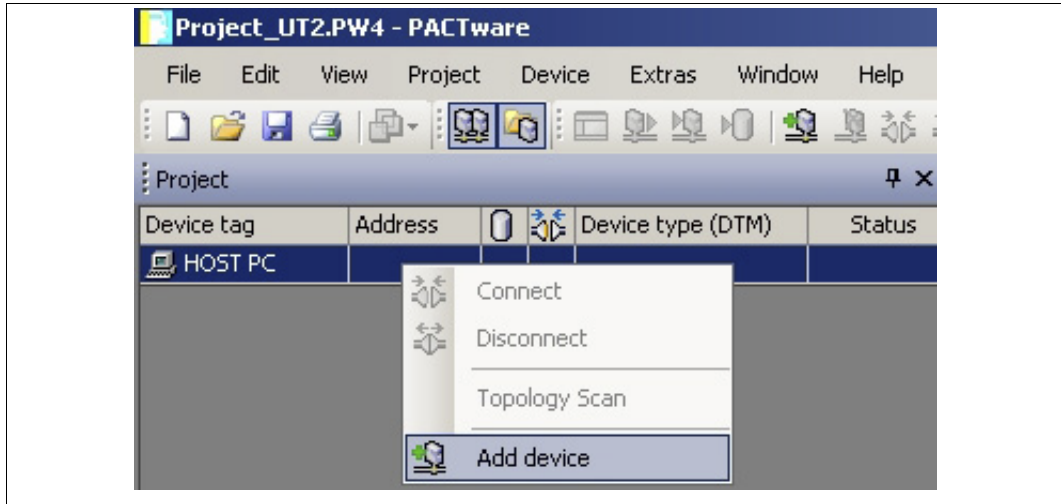
1. Start PACTware™ by double-clicking the icon .
 - > The PACTware™ main window is displayed.
2. Open an existing project with **Open project**.



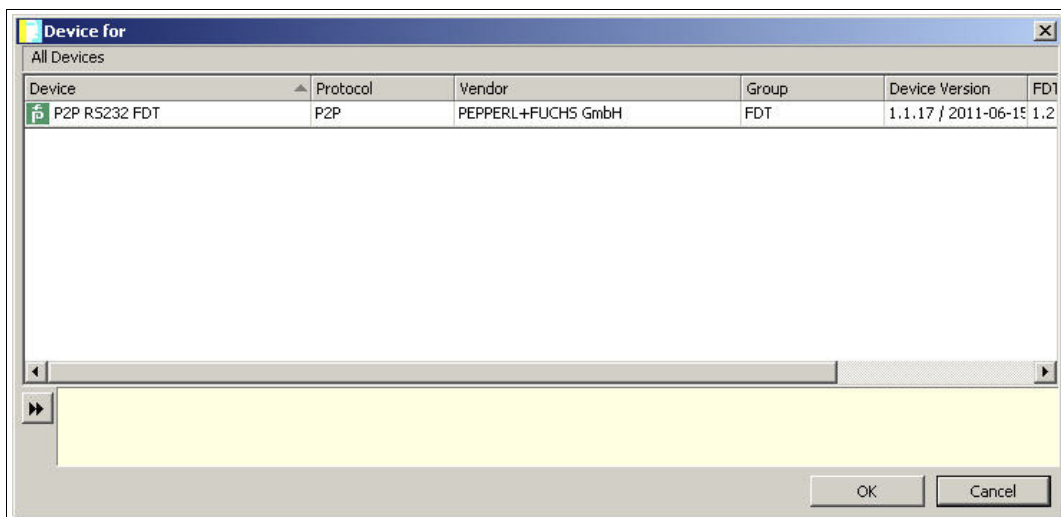


Adding a Communication DTM to the Project

1. In the project window, select **HOST PC** and then use the right mouse button to open the context menu.
2. Select **Add device**.

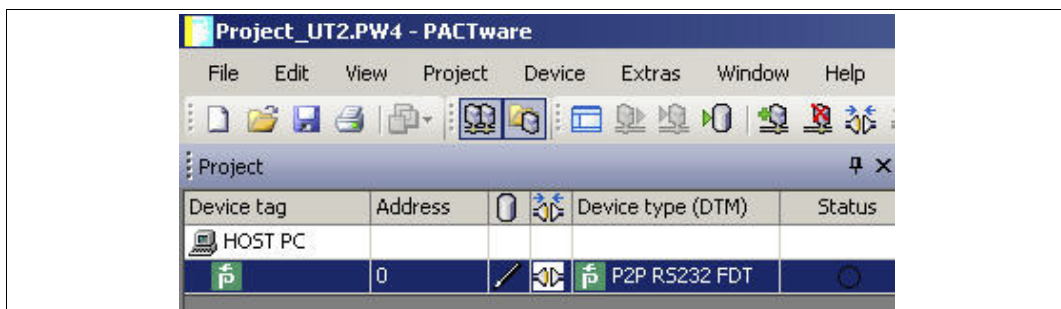


> The list of communication DTMs is displayed.



3. Select the communication DTM P2P RS232 FDT and confirm your selection with **OK**. The communication DTM P2P RS232 FDT is required for both connection versions — via the 9-pin serial interface and the USB interface.

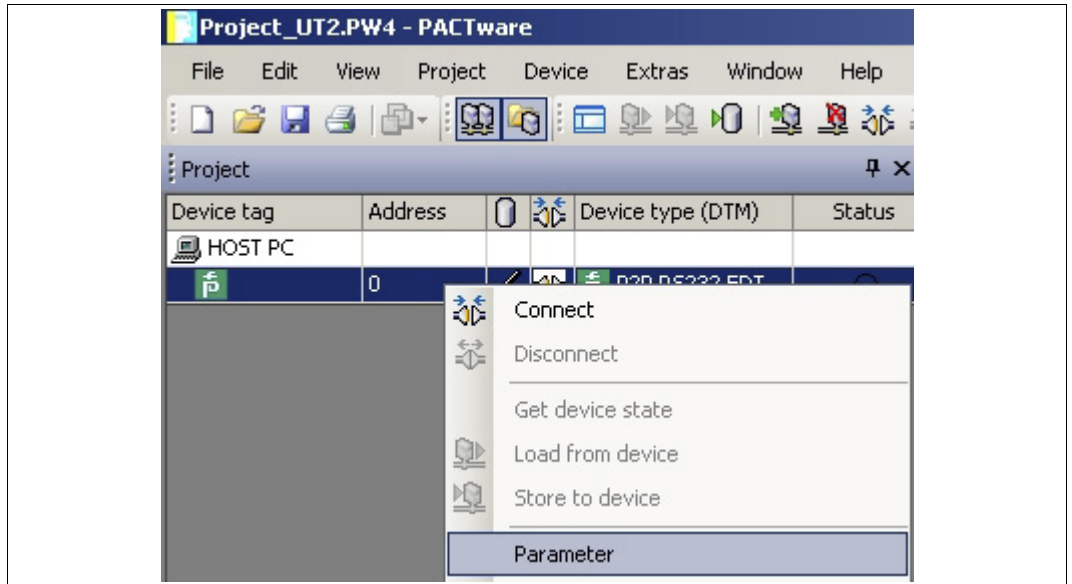
> The communication DTM is included in the project tree.



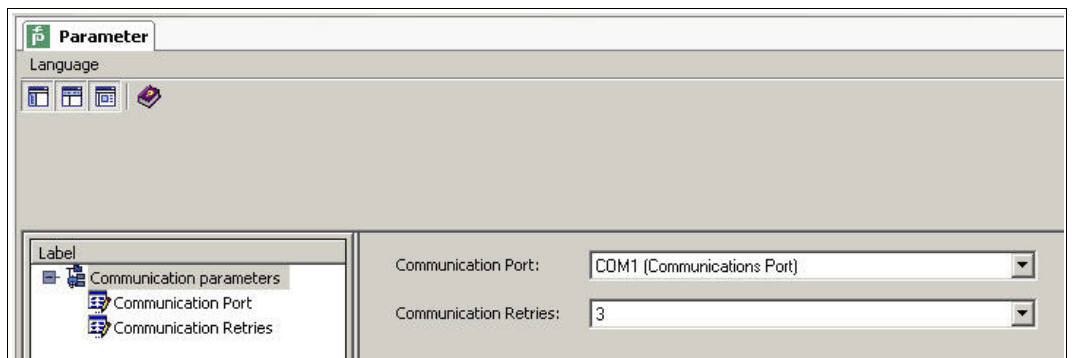


Configuring the Communication DTM

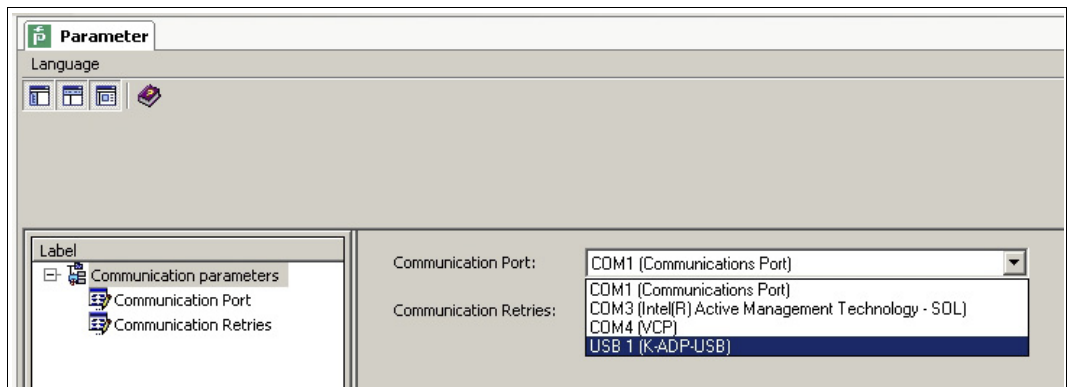
1. Where necessary, disconnect the PC from the communication DTM. See the "Disconnecting the Communication DTM and PC" section in this chapter.
2. In the project window, select **P2P RS232 FDT** and then use the right mouse button to open the context menu.
3. Choose **Parameter**.



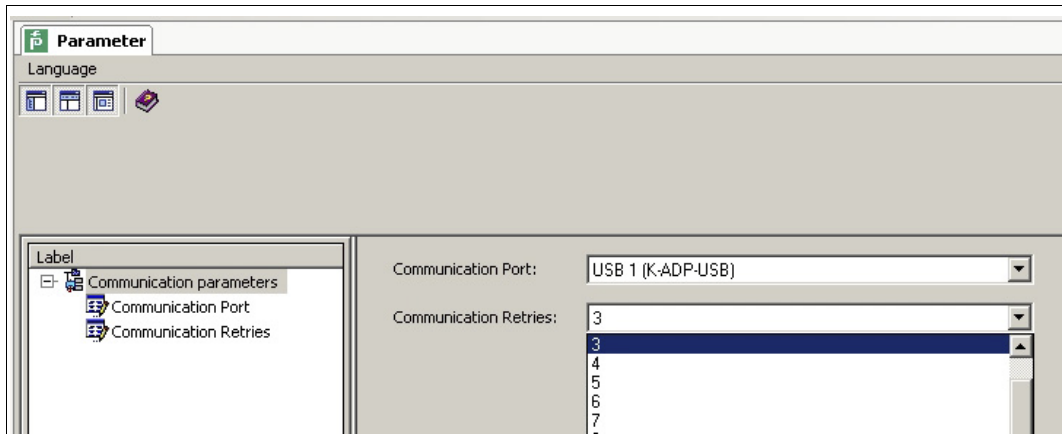
> The Parameter window is displayed.



4. From the **Communication Port** drop-down list, select the desired parameter. You can select communication port USB 1 (K-ADP-USB) only if the K-ADP-USB adapter was connected **before** you started to configure the communication DTM.



- From the **Communication Retries** drop-down list, select the desired parameter.

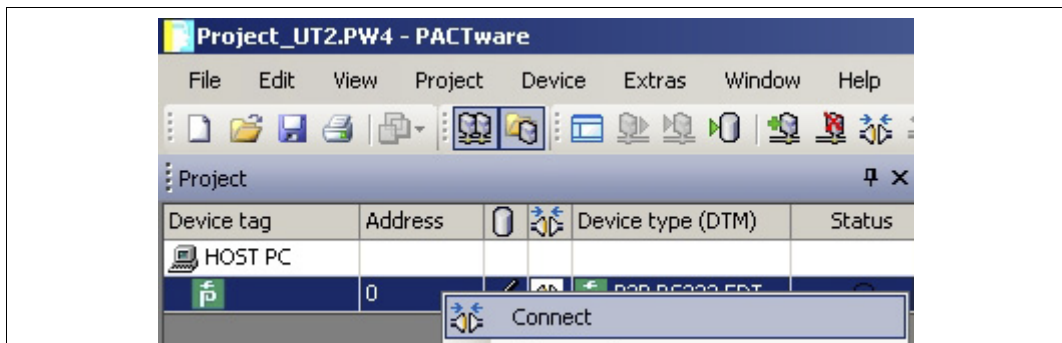


> The communication DTM is configured.



Establishing the Connection between the Communication DTM and PC

- In the project window, select **P2P RS232 FDT** and then use the right mouse button to open the context menu.
- Choose **Connect**.

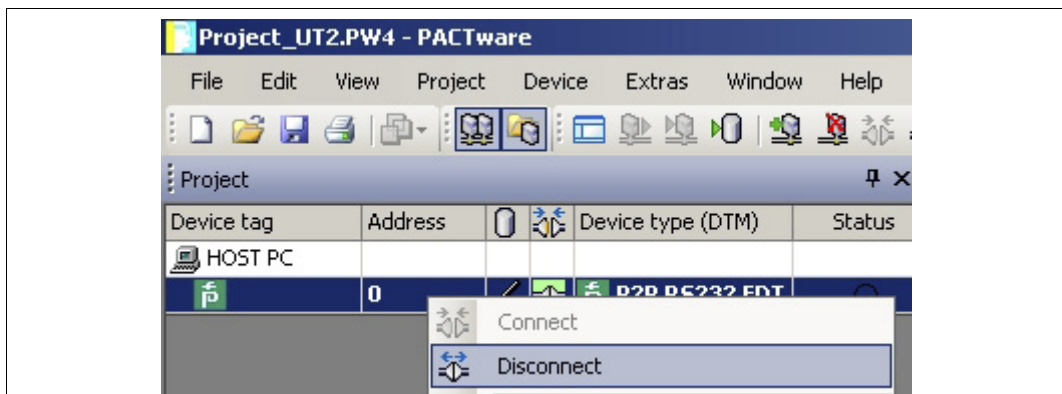


> The connection is established. The connection status is displayed: 



Disconnecting the Communication DTM from the PC

- In the project window, select **P2P RS232 FDT** and then use the right mouse button to open the context menu.
- Choose **Disconnect**.

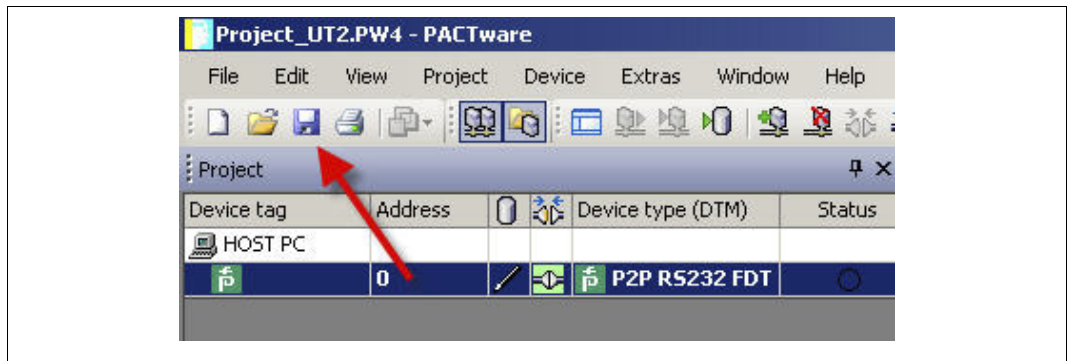


> The connection is disconnected. The status is displayed: 



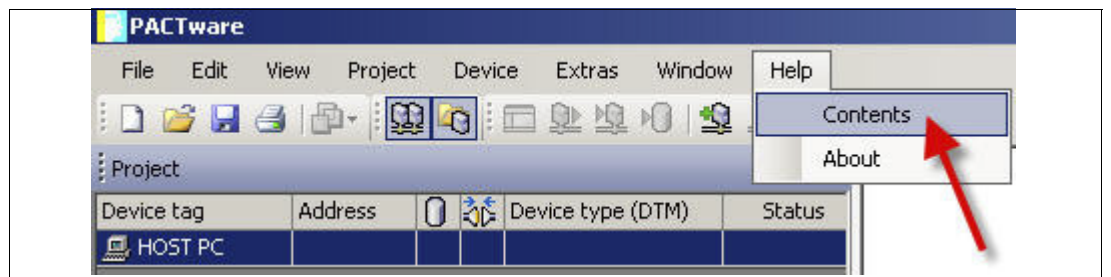
Saving a Project

Save the project with **Save project**.



Note!

For more information on operating PACTware™, See the online help.



2.3 Configuring the Device DTM

Various device DTMs are available for the devices. Select the appropriate device DTM for your device from the device list. You can configure the device only if you have selected the correct device DTM.


Device	Device DTM
ED2-UT-Ex2 ED2-UT-Ex2-2	ED2-UT-* FDT
HiD2081	HiD2081 FDT
HiD2082	HiD2082 FDT
HiD2891	HiD2891 FDT
KFD2-CRG-1.D KFD2-CRG-Ex1.D KFU8-CRG-1.D KFU8-CRG-Ex1 KFU8-CRG-Ex1.D	KF*-CRG-* FDT
KFD2-CRG2-1.D KFD2-CRG2-Ex1.D KFU8-CRG2-1.D KFU8-CRG2-Ex1.D	KF*-CRG2-* FDT
KFD2-GU-1 KFD2-GU-Ex1	KFD2-GU-* FDT
KFD2-GUT-1.D KFD2-GUT-Ex1.D KFU8-GUT-1.D KFU8-GUT-Ex1.D	KF*-GUT-* FDT
KFD2-UFC-1 KFD2-UFC-1.D KFD2-UFC-Ex1 KFD2-UFC-Ex1.D KFU8-UFC-1 KFU8-UFC-1.D KFU8-UFC-Ex1 KFU8-UFC-Ex1.D	KF*-UFC-* FDT
KFD2-UFT-2.D KFD2-UFT-Ex2 KFD2-UFT-Ex2.D KFU8-UFT-2.D KFU8-UFT-Ex2 KFU8-UFT-Ex2.D	KF*-UFT-* FDT
KFD2-UT-1 KFD2-UT-1-1 KFD2-UT-Ex1 KFD2-UT-Ex1-1	KFD2-UT-* FDT
KFD2-UT2-1 KFD2-UT2-1-1 KFD2-UT2-2 KFD2-UT2-2-1 KFD2-UT2-Ex1 KFD2-UT2-Ex1-1 KFD2-UT2-Ex2 KFD2-UT2-Ex2-1	KF*-UT2-* FDT
KFD2-WAC2-1.D KFD2-WAC2-Ex1.D	KF*-WAC2-* FDT

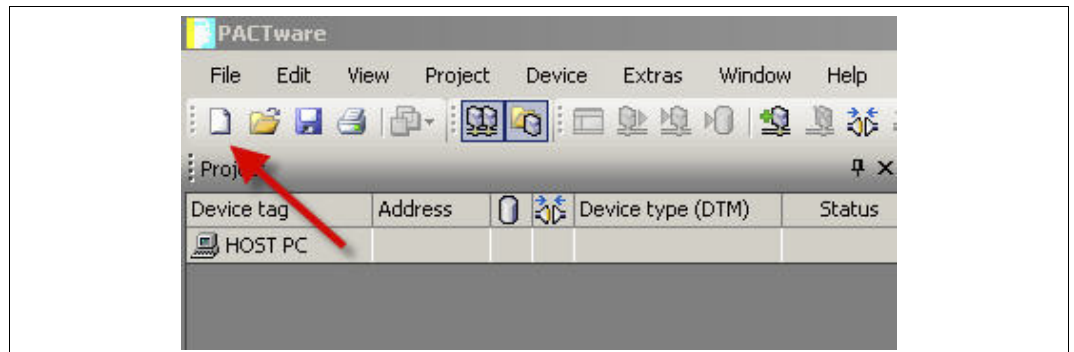
Table 2.1

The configuration of the device is shown using the configuration of the KFD2-UT2-Ex2 temperature converter as an example.



Starting a Project


1. Start PACTware™ by double-clicking the icon .
> The PACTware™ main window is displayed.
2. Start a new project via **Create new project**.

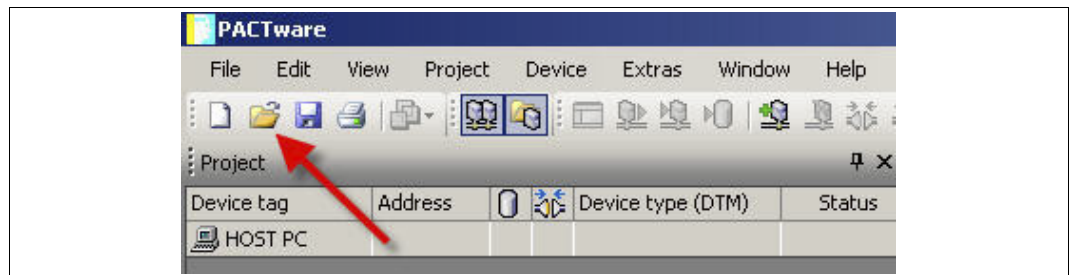


or



Opening a Project

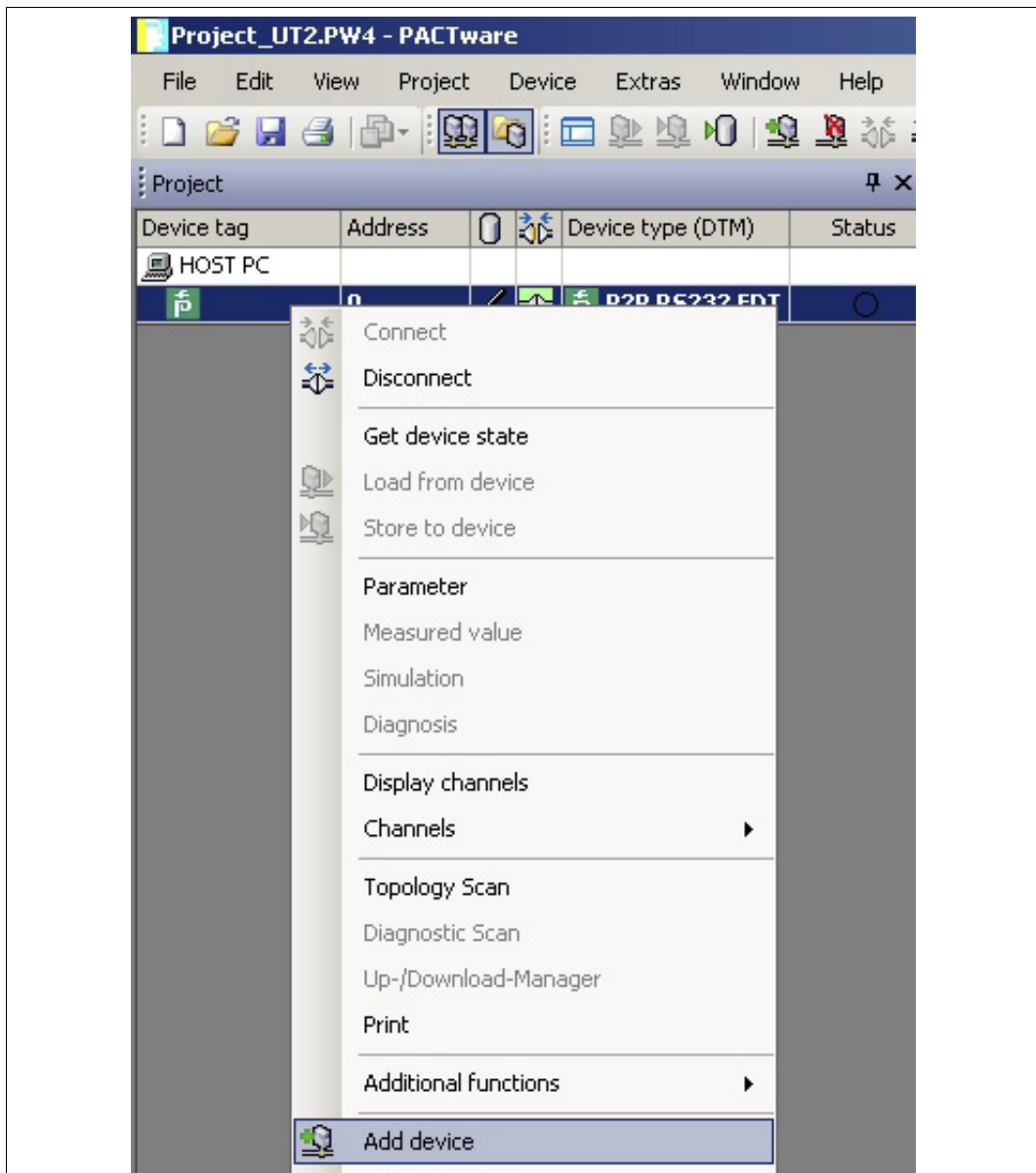
1. Start PACTware™ by double-clicking the icon .
> The PACTware™ main window is displayed.
2. Open an existing project with **Open project**.



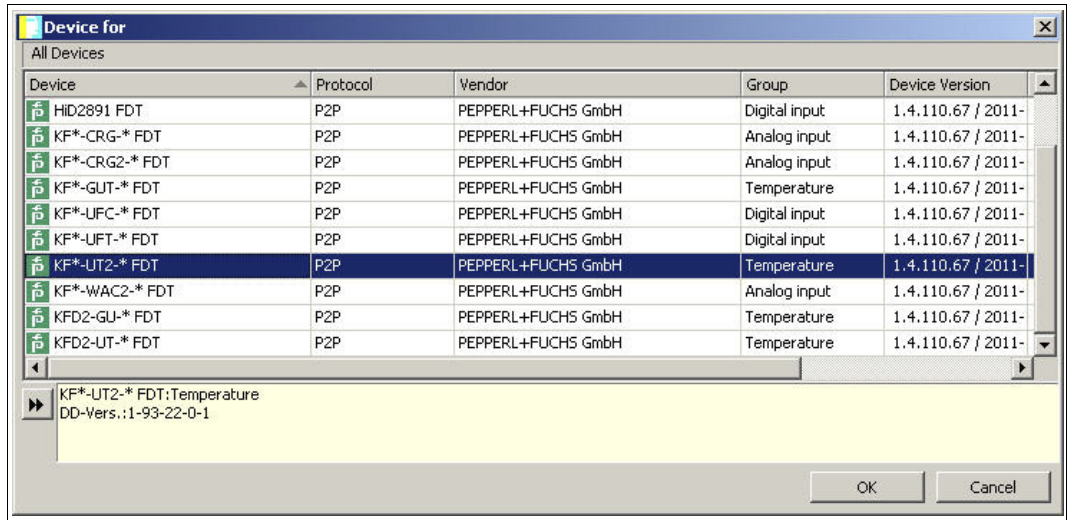


Adding a Device to the Project

1. Add a communication DTM to your project. See chapter 2.2.
2. In the project window, select **P2P RSD232 FDT** and then use the right mouse button to open the context menu.
3. Select **Add device**.

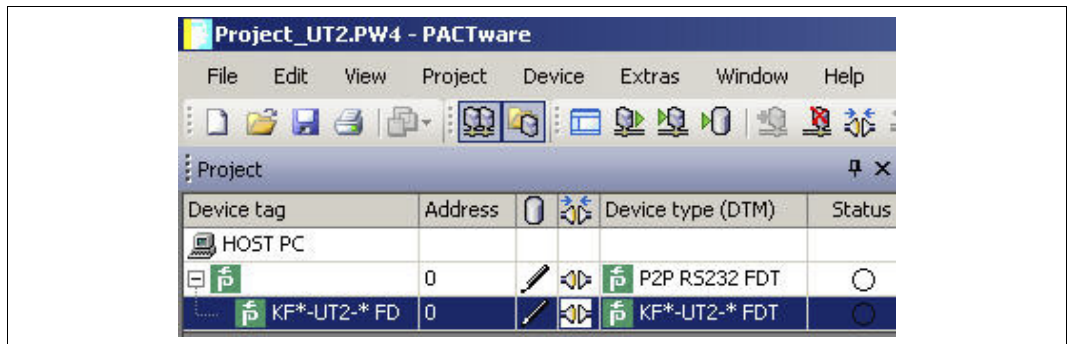


> The list of device DTMs is displayed.



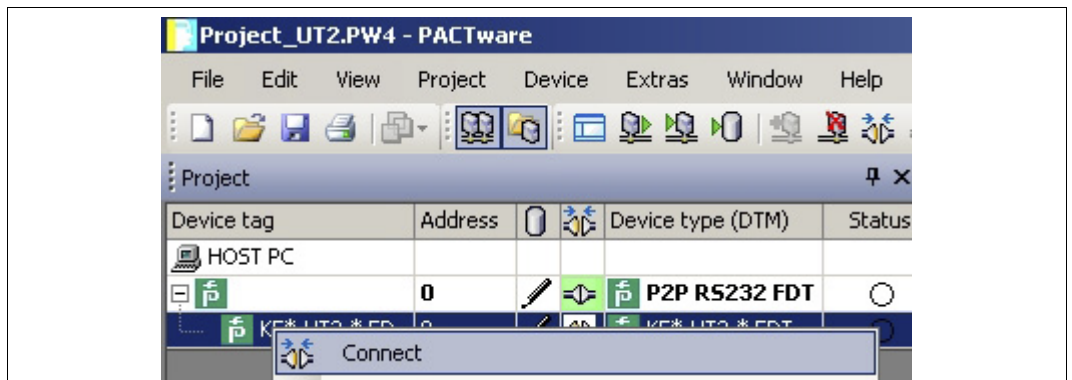
4. Select the required device DTM and confirm your selection with **OK**.
Example: KF*-UT2-*FDT.

> The device DTM is included in the project tree.



Establishing the Connection between the Device and PC

1. In the project window, select **KF*-UT2-*FDT** and then use the right mouse button to open the context menu.
2. Choose **Connect**.

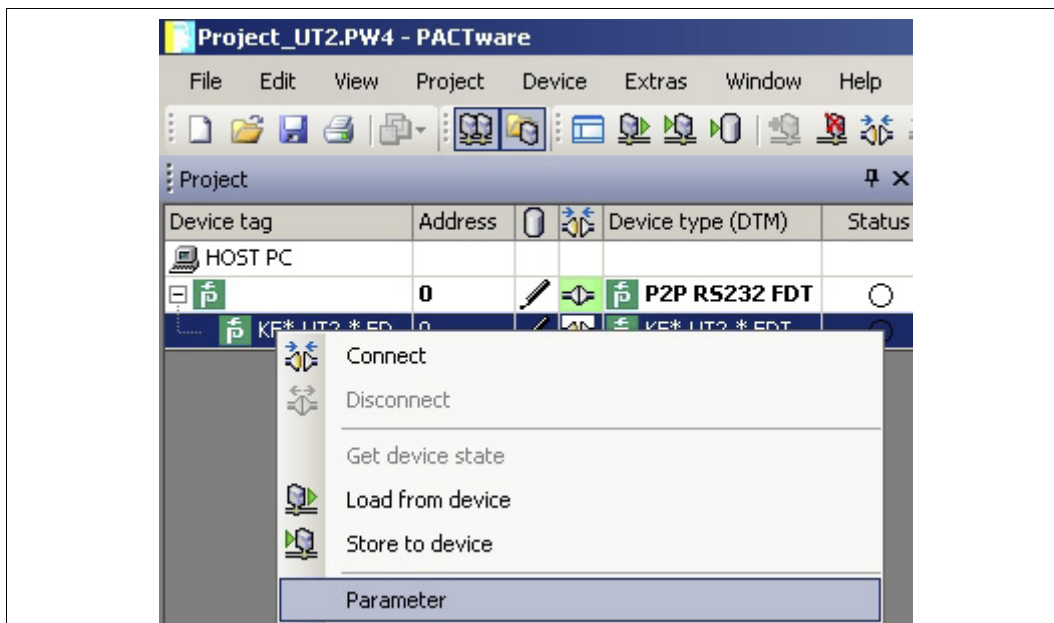


> The connection is established. The connection status is displayed:

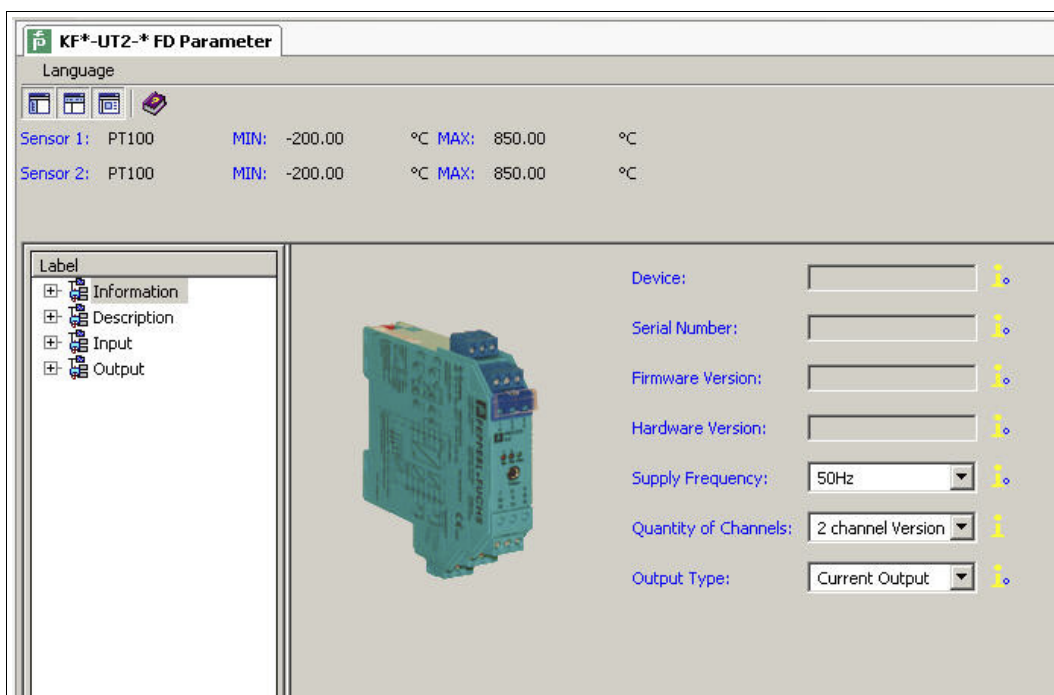


Configuring the Device

1. In the project window, select **KF*-UT2-*FDT** and then use the right mouse button to open the context menu.
2. Choose **Parameter**.



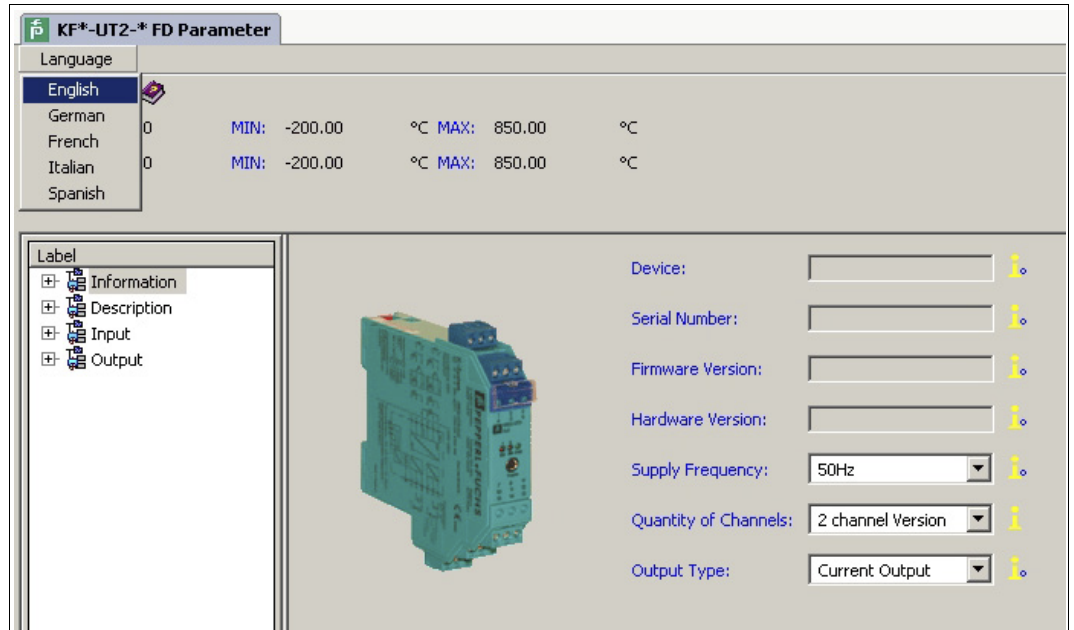
> The Parameter window is displayed.





Changing the Language for Parameter Window

1. Change the language using the menu **Language** in the Parameter window.
2. Select the required parameter language in the drop-down list.

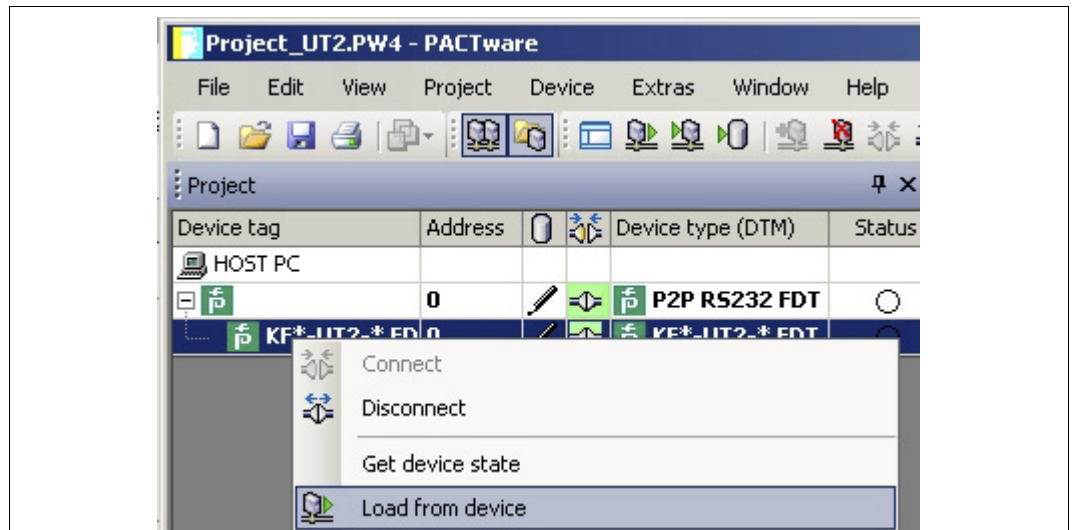


> The Language for Parameter window is changed.

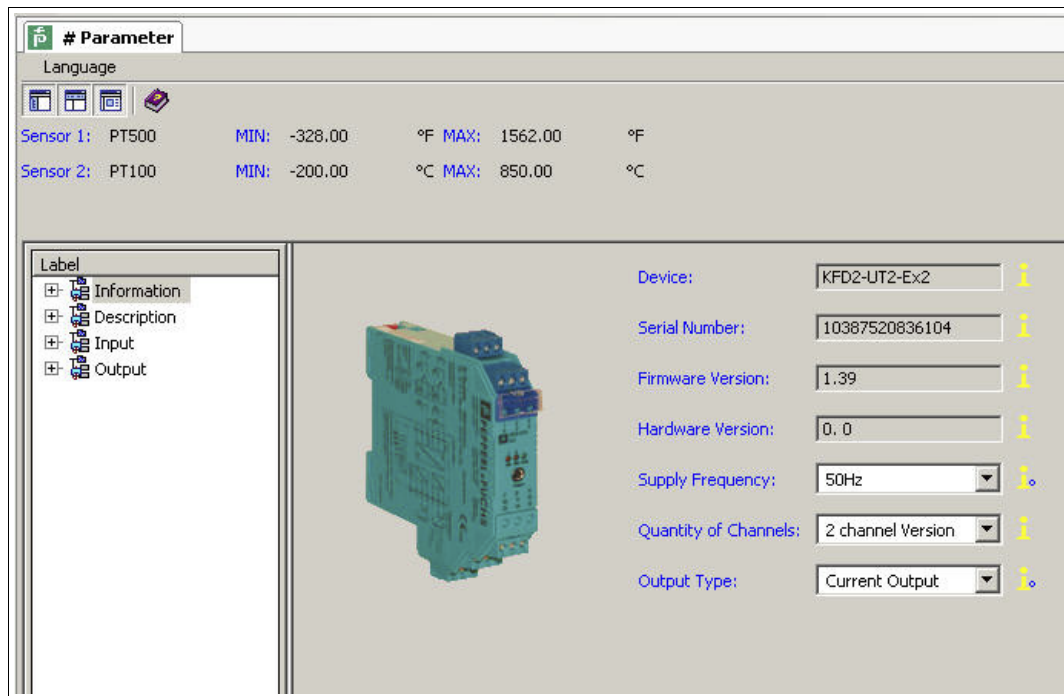


Loading Device Data from the Device

1. In the project window, select **KF*-UT2-*FDT** and then use the right mouse button to open the context menu.
2. To transfer device data from the device to the PC, choose **Load from device**.



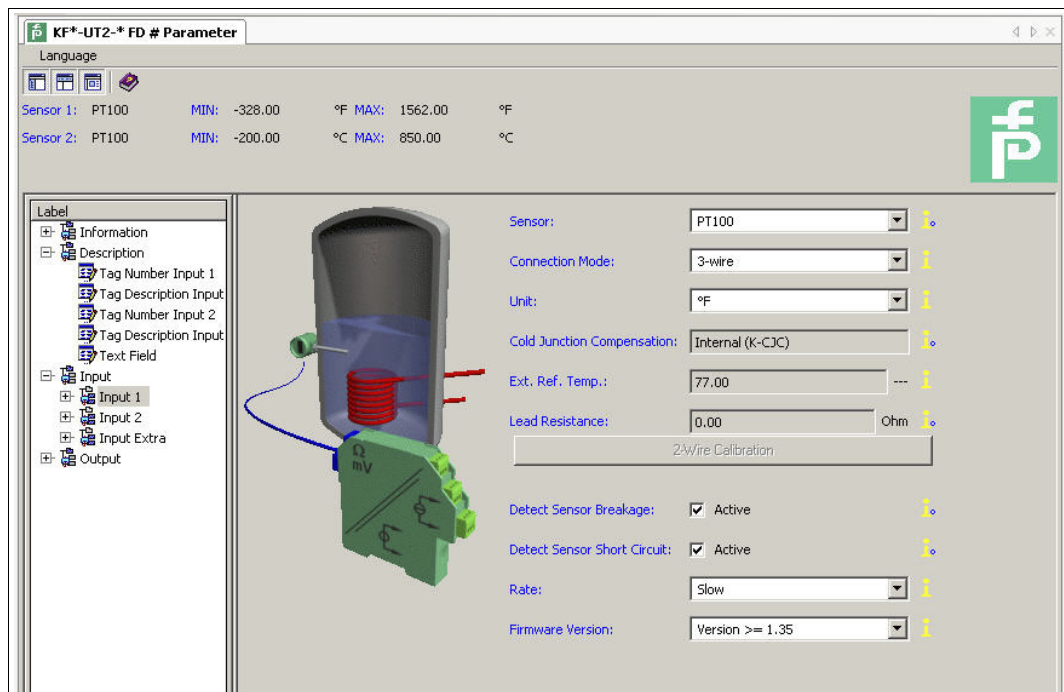
> The device data is displayed.



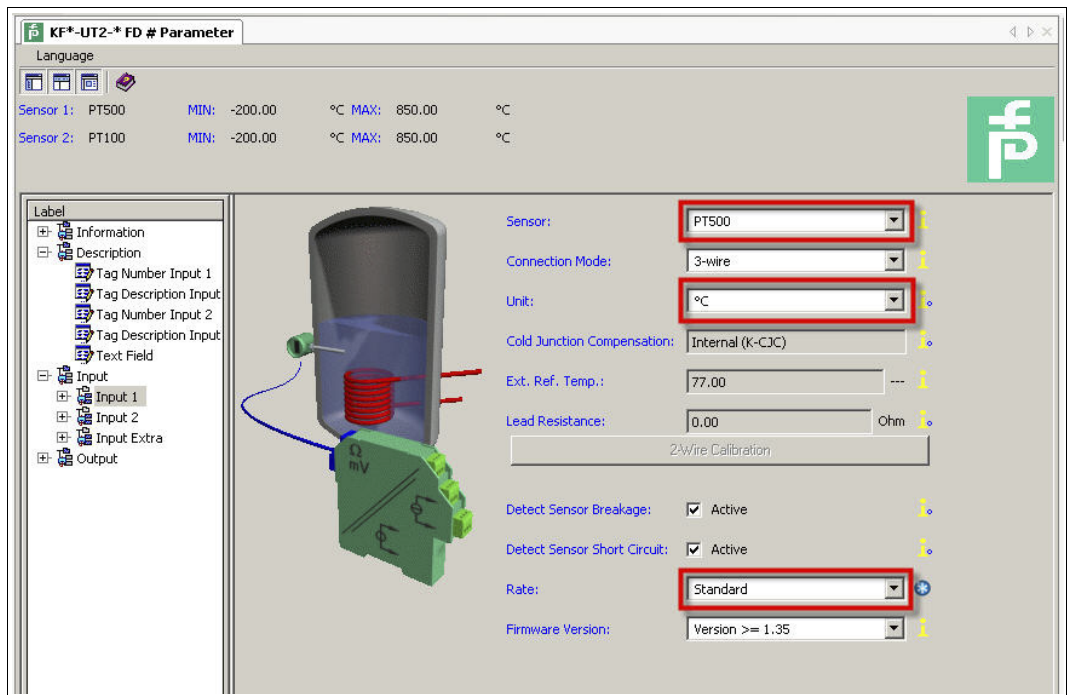
Editing Device Data

1. In the project tree, choose the entry that you want to edit. Example: Input 1.

> The device data for Input 1 is displayed.



2. Edit the device data. For more information about editing the device data, See the **KFD2-UT2-(Ex)*(-1) Temperature Converter Manual**.

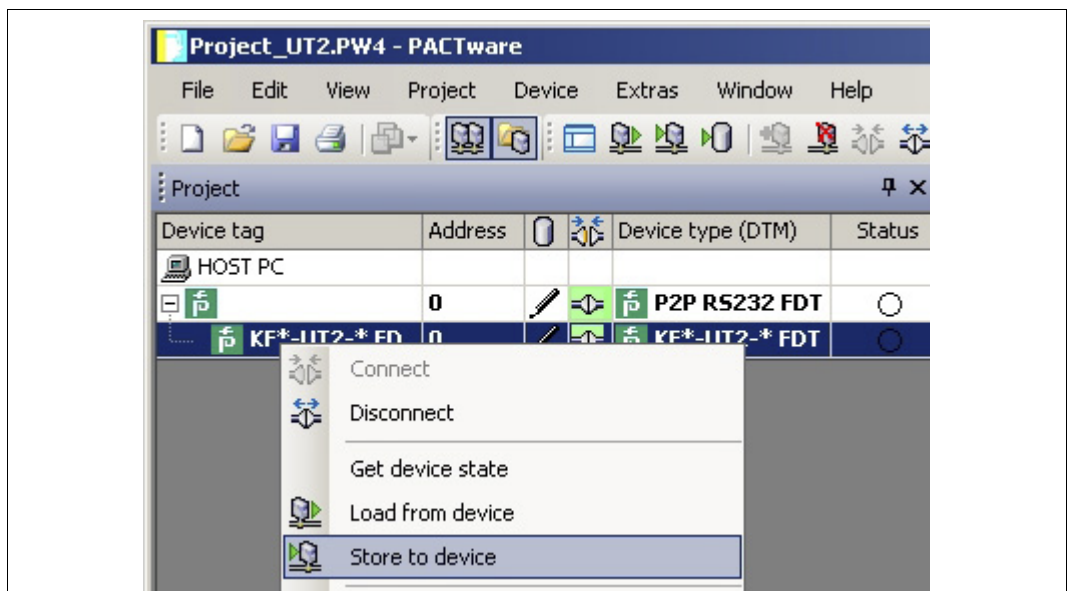


3. Select the required parameter from the drop-down list.
4. Confirm your selection with **Return**.



Storing Device Data on the Device

1. In the project window, select **KF*-UT2-*(Ex)*(-1) FDT** and then use the right mouse button to open the context menu.
2. To transfer device data from the PC to the device, choose **Store to device**.

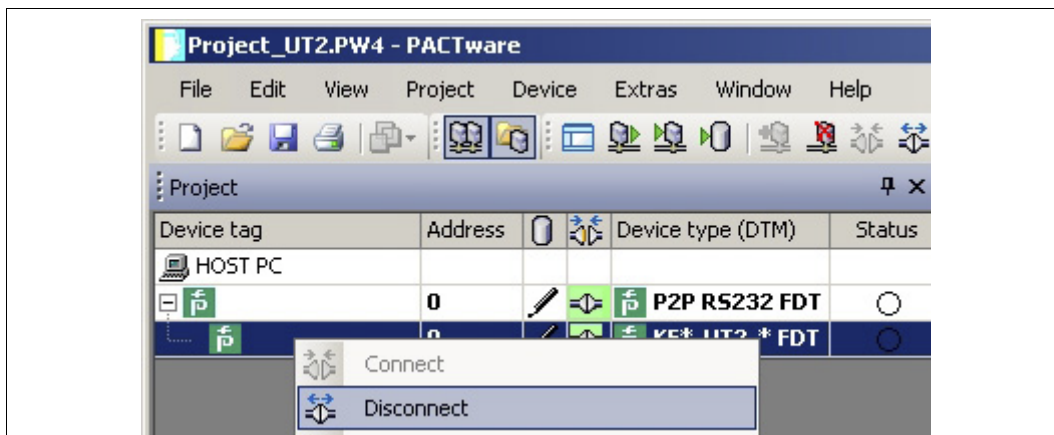


> The device is now configured.



Disconnecting Devices from PCs

1. In the project window, select **KF*-UT2-*FDT** and then use the right mouse button to open the context menu.
2. Choose **Disconnect**.



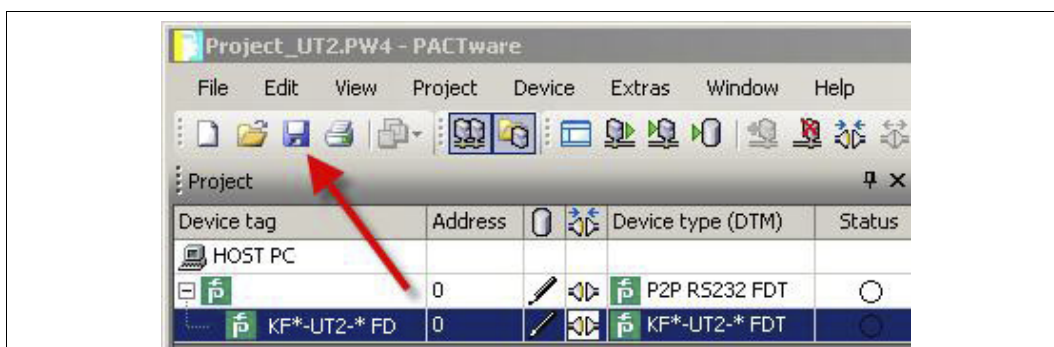
> The connection is disconnected. The status is displayed:

3. Disconnect the device from the PC by removing the adapter cable from the device or PC.



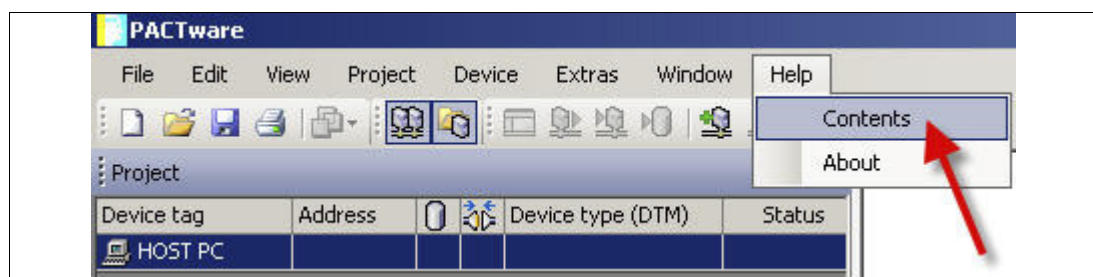
Saving a Project

Save the project with **Save project**.



Note!

For more information on operating PACTware™, See the online help.



Configuration

Adding a Communication DTM to the Project	8
Adding a Device to the Project	14
Changing the Language	17
Configuring the Communication DTM	9
Configuring the Device	16
Disconnecting the Communication DTM from the PC.....	10
Disconnecting Devices from PCs	20
Editing Device Data	18
Establishing the Connection between the Communication DTM and PC	10
Establishing the Connection between the Device and PC	15
Loading Device Data from the Device	17
Opening a Project	7, 13
Saving a Project	5, 11, 20
Storing Device Data on the Device	19
Starting a Project	5, 7, 13

PROCESS AUTOMATION – PROTECTING YOUR PROCESS



Worldwide Headquarters

Pepperl+Fuchs GmbH
68307 Mannheim · Germany
Tel. +49 621 776-0
E-mail: info@de.pepperl-fuchs.com

For the Pepperl+Fuchs representative
closest to you check www.pepperl-fuchs.com/contact

www.pepperl-fuchs.com

Subject to modifications
Copyright PEPPERL+FUCHS • Printed in Germany

 **PEPPERL+FUCHS**
PROTECTING YOUR PROCESS

TDOCT-2810AENG
12/2012